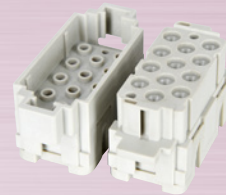
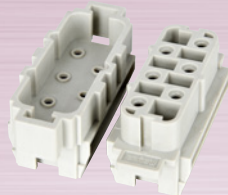
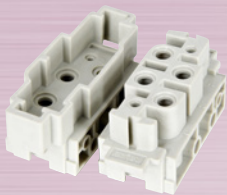


接插体 Insert Series

材料 Material : PC



HK-004/2-M、F 电力区 信号区

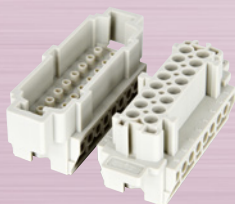
工作电流 Rated current	80A	16A
工作电压 Rated voltage	830V	400V
阻燃等级 (据 UL94) Flammability acc.	V0	
压线方式 Terminal	M6 螺钉压接	M3 螺钉压接
导线截面 Wire gauge	1.5~16.0mm ²	1.0~2.5mm ²

HSB-006-M HSB-006-F

工作电流 Rated current	35A
工作电压 Rated voltage	400/690V
阻燃等级 (据 UL94) Flammability acc.	V0
压线方式 Terminal	M4 螺钉压接 Screw terminal
导线截面 Wire gauge	4.0~6.0mm ²

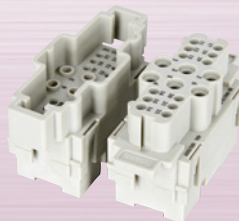
HK-012/2-MC、FC 电力区 信号区

工作电流 Rated current	40A	10A
工作电压 Rated voltage	690V	250V
阻燃等级 (据 UL94) Flammability acc.	V0	
压线方式 Terminal	冷压针压接	Crimp terminal
导线截面 Wire gauge	1.5~6.0mm ²	0.14~2.5mm ²



HE-016-M HE-016-F

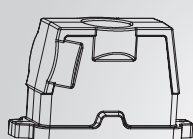
工作电流 Rated current	16A
工作电压 Rated voltage	500V
阻燃等级 (据 UL94) Flammability acc.	V0
压线方式 Terminal	M3 螺钉压接 Screw terminal
导线截面 Wire gauge	1.0~2.5mm ²



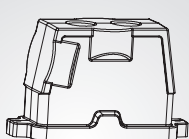
HK-006/12-M、F 电力区 信号区

工作电流 Rated current	40A	10A
工作电压 Rated voltage	690V	250V
阻燃等级 (据 UL94) Flammability acc.	V0	
压线方式 Terminal	轴向压接	冷压针压接
导线截面 Wire gauge	2.5~8.0mm ²	0.5~2.5mm ²

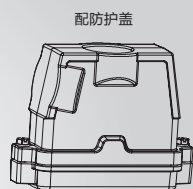
HP16B 上壳 HP16B Metal Housings

顶部进线
Top entry

HP16B-TEH-2S-M25
HP16B-TEH-2S-M32
HP16B-TEH-2S-M40
HP16B-TEH-2S-M50
HP16B-TEH-2S-PG21
HP16B-TEH-2S-PG29
HP16B-TEH-2S-PG36



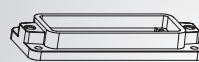
HP16B-TEH-2S-M20
HP16B-TEH-2S-2PG16
HP16B-TEH-2S-2M25
HP16B-TEH-2S-M25-M20



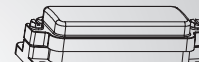
HP16B-TEH-2S-M25-MCV
HP16B-TEH-2S-M32-MCV
HP16B-TEH-2S-M40-MCV
HP16B-TEH-2S-M50-MCV
HP16B-TEH-2S-PG21-MCV
HP16B-TEH-2S-PG29-MCV
HP16B-TEH-2S-PG36-MCV

配防护盖

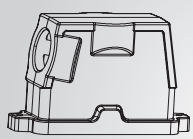
HP16B 底壳 HP16B Metal Bottoms

开孔安装
Bulkhead mounting

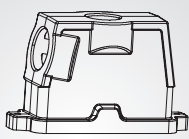
HP16B-BK-2H



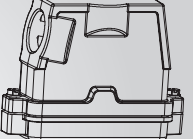
HP16B-BK-2H-MCV

侧面进线
Side entry

HP16B-SEH-2S-M25
HP16B-SEH-2S-M32
HP16B-SEH-2S-M40
HP16B-SEH-2S-M50
HP16B-SEH-2S-PG21
HP16B-SEH-2S-PG29
HP16B-SEH-2S-PG36

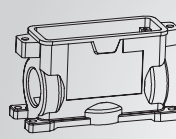


HP16B-SEH-2S-M40-PG16
HP16B-SEH-2S-M32-PG21
HP16B-SEH-2S-PG29-M32
HP16B-SEH-2S-PG36-M25

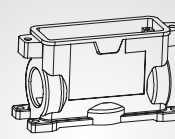


HP16B-SEH-2S-M25-MCV
HP16B-SEH-2S-M32-MCV
HP16B-SEH-2S-M40-MCV
HP16B-SEH-2S-M50-MCV
HP16B-SEH-2S-PG21-MCV
HP16B-SEH-2S-PG29-MCV
HP16B-SEH-2S-PG36-MCV

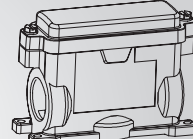
配防护盖

表面安装
Surface mounting

HP16B-SFH-2H-M25
HP16B-SFH-2H-M32
HP16B-SFH-2H-M40
HP16B-SFH-2H-PG21
HP16B-SFH-2H-PG29
HP16B-SFH-2H-PG36



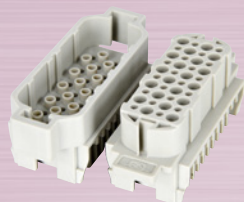
HP16B-SFH-2H-M25
HP16B-SFH-2H-2M32
HP16B-SFH-2H-2PG16
HP16B-SFH-2H-2PG21
HP16B-SFH-2H-PG29-M32
HP16B-SFH-2H-M20-M40



HP16B-SFH-2H-M25-MCV
HP16B-SFH-2H-M32-MCV
HP16B-SFH-2H-M40-MCV
HP16B-SFH-2H-PG21-MCV
HP16B-SFH-2H-PG29-MCV
HP16B-SFH-2H-PG36-MCV

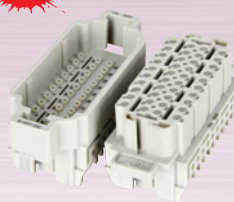
配防护盖

备注: 1、T: 铁扣 2、S: 塑料铁扣 3、N: 新 4、CV: 尼龙防尘盖 5、MCV: 金属防尘盖



HD-040-MC HD-040-FC

工作电流 Rated current	10A
工作电压 Rated voltage	250V
阻燃等级 (据 UL94) Flammability acc.	V0
压线方式 Terminal	冷压针压接 Crimp terminal
导线截面 Wire gauge	0.14~2.5mm ²



HDD-040-M HDD-040-F

工作电流 Rated current	10A
工作电压 Rated voltage	250V
阻燃等级 (据 UL94) Flammability acc.	V0
压线方式 Terminal	M2.5 铜螺钉压接 Screw terminal
导线截面 Wire gauge	0.5~2.5mm ²



HEE-032-MC HEE-032-FC

工作电流 Rated current	16A
工作电压 Rated voltage	500V
阻燃等级 (据 UL94) Flammability acc.	V0
压线方式 Terminal	冷压针压接 Crimp terminal
导线截面 Wire gauge	0.5~4.0mm ²

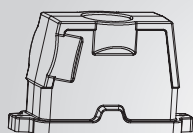


HE-020-M HE-020-F

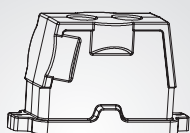
工作电流 Rated current	16A
工作电压 Rated voltage	400/500V
阻燃等级 (据 UL94) Flammability acc.	V0
压线方式 Terminal	M3 螺钉压接 Screw terminal
导线截面 Wire gauge	1.0~2.5mm ²

HP16B 上壳 HP16B Metal Housings

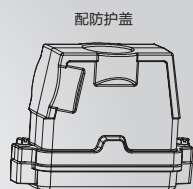
顶部进线
Top entry



HP16B-TEH-2S-M25
HP16B-TEH-2S-M32
HP16B-TEH-2S-M40
HP16B-TEH-2S-M50
HP16B-TEH-2S-PG21
HP16B-TEH-2S-PG29
HP16B-TEH-2S-PG36



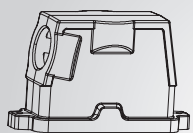
HP16B-TEH-2S-2M20
HP16B-TEH-2S-2PG16
HP16B-TEH-2S-2M25
HP16B-TEH-2S-M25-M20



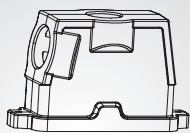
HP16B-TEH-2S-M25-MCV
HP16B-TEH-2S-M32-MCV
HP16B-TEH-2S-M40-MCV
HP16B-TEH-2S-M50-MCV
HP16B-TEH-2S-PG21-MCV
HP16B-TEH-2S-PG29-MCV
HP16B-TEH-2S-PG36-MCV

配防护盖

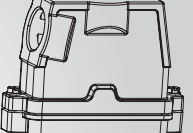
侧面进线
Side entry



HP16B-SEH-2S-M25
HP16B-SEH-2S-M32
HP16B-SEH-2S-M40
HP16B-SEH-2S-M50
HP16B-SEH-2S-PG21
HP16B-SEH-2S-PG29
HP16B-SEH-2S-PG36



HP16B-SEH-2S-M40-PG16
HP16B-SEH-2S-M32-PG21
HP16B-SEH-2S-PG29-M32
HP16B-SEH-2S-PG36-M25

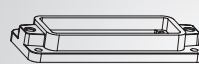


HP16B-SEH-2S-M25-MCV
HP16B-SEH-2S-M32-MCV
HP16B-SEH-2S-M40-MCV
HP16B-SEH-2S-M50-MCV
HP16B-SEH-2S-PG21-MCV
HP16B-SEH-2S-PG29-MCV
HP16B-SEH-2S-PG36-MCV

配防护盖

HP16B 底壳 HP16B Metal Bottoms

开孔安装
Bulkhead mounting

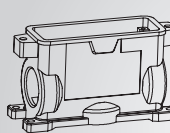


HP16B-BK-2H

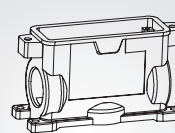


HP16B-BK-2H-MCV

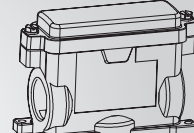
表面安装
Surface mounting



HP16B-SFH-2H-M25
HP16B-SFH-2H-M32
HP16B-SFH-2H-M40
HP16B-SFH-2H-PG21
HP16B-SFH-2H-PG29
HP16B-SFH-2H-PG36



HP16B-SFH-2H-2M25
HP16B-SFH-2H-2M32
HP16B-SFH-2H-2PG16
HP16B-SFH-2H-2PG21
HP16B-SFH-2H-PG29-M32
HP16B-SFH-2H-M20-M40



HP16B-SFH-2H-M25-MCV
HP16B-SFH-2H-M32-MCV
HP16B-SFH-2H-M40-MCV
HP16B-SFH-2H-PG21-MCV
HP16B-SFH-2H-PG29-MCV
HP16B-SFH-2H-PG36-MCV

配防护盖