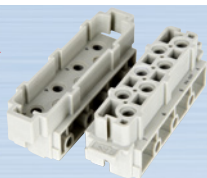


## 接插体 Insert Series

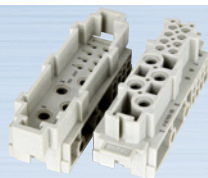
材料 Material : PC

NEW



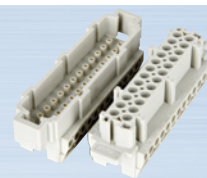
HK-007-M HK-007-F

工作电流 Rated current	80A
工作电压 Rated voltage	830V
阻燃等级 (据 UL94) Flammability acc.	V0
压线方式 Terminal	M6 螺钉压接 Screw terminal
导线截面 Wire gauge	1.5~16.0mm <sup>2</sup>



HK-004/8-M、F 电力区 信号区

工作电流 Rated current	80A	16A
工作电压 Rated voltage	400V	400V
阻燃等级 (据 UL94) Flammability acc.	V0	
压线方式 Terminal	M6 螺钉压接	M3 螺钉压接
导线截面 Wire gauge	1.5~16.0mm <sup>2</sup>	0.5~2.5mm <sup>2</sup>



HE-024-M HE-024-F

工作电流 Rated current	16A
工作电压 Rated voltage	500V
阻燃等级 (据 UL94) Flammability acc.	V0
压线方式 Terminal	M3 螺钉压接 Screw terminal
导线截面 Wire gauge	1.0~2.5mm <sup>2</sup>



HEE-046-MC HEE-046-FC

工作电流 Rated current	16A
工作电压 Rated voltage	500V
阻燃等级 (据 UL94) Flammability acc.	V0
压线方式 Terminal	冷压针压接 Crimp terminal
导线截面 Wire gauge	0.5~4.0mm <sup>2</sup>



HD-064-MC HD-064-FC

工作电流 Rated current	10A
工作电压 Rated voltage	250V
阻燃等级 (据 UL94) Flammability acc.	V0
压线方式 Terminal	冷压针压接 Crimp terminal
导线截面 Wire gauge	0.14~2.5mm <sup>2</sup>

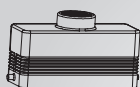
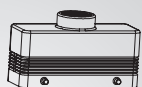
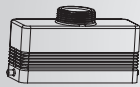
NEW



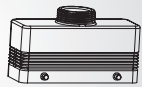
HDE-064-M HDE-064-F

工作电流 Rated current	10A
工作电压 Rated voltage	250V
阻燃等级 (据 UL94) Flammability acc.	V0
压线方式 Terminal	M2.5 铜螺钉压接 Screw terminal
导线截面 Wire gauge	0.5~2.5mm <sup>2</sup>

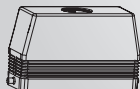
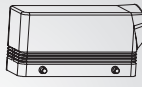
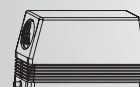
## H24B 上壳 H24B Metal Housings

顶部进线  
Top entryH24B-TE-2B-PG21  
H24B-TE-2B-M25  
H24B-TE-2B-M32H24B-TE-4B-PG21  
H24B-TE-4B-M25  
H24B-TE-4B-M32

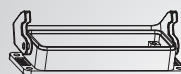
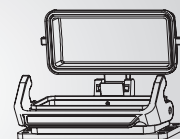
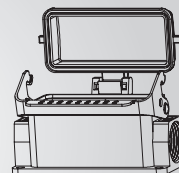
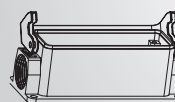
H24B-TE-2B-17/16-18



H24B-TE-4B-17/16-18

H24B-TEH-2B-PG21  
H24B-TEH-2B-PG29  
H24B-TEH-2B-M32  
H24B-TEH-2B-M40H24B-TEH-4B-PG21  
H24B-TEH-4B-PG29  
H24B-TEH-4B-M32  
H24B-TEH-4B-M40侧面进线  
Side entryH24B-SE-2B-PG21  
H24B-SE-2B-M25  
H24B-SE-2B-M32H24B-SE-4B-PG21  
H24B-SE-4B-M25  
H24B-SE-4B-M32H24B-SEH-2B-PG21  
H24B-SEH-2B-PG29  
H24B-SEH-2B-M32  
H24B-SEH-2B-M40H24B-SEH-4B-PG21  
H24B-SEH-4B-PG29  
H24B-SEH-4B-M32  
H24B-SEH-4B-M40

## H24B 底壳 H24B Metal Bottoms

开孔安装  
Bulkhead mountingH24B-BK-1L-S  
H24B-BK-1L-TH24B-BK-1L-MCV-S  
H24B-BK-1L-MCV-TH24B-BK-2L-T  
H24B-BK-2L-S表面安装  
Surface mountingH24B-SF-2L-PG21-S  
H24B-SF-2L-PG21-T  
H24B-SF-2L-M25-S  
H24B-SF-2L-M25-TH24B-SF-1L-PG21-MCV-S  
H24B-SF-1L-M25-MCV-TH24B-SF-1L-PG21-S  
H24B-SF-1L-PG21-T  
H24B-SF-1L-M25-S  
H24B-SF-1L-M25-T

备 注: 1、T: 铁扣 2、S: 塑料铁扣 3、N: 新 4、CV: 尼龙防尘盖 5、MCV: 金属防尘盖