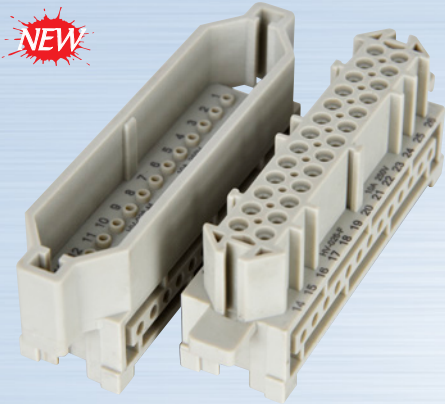


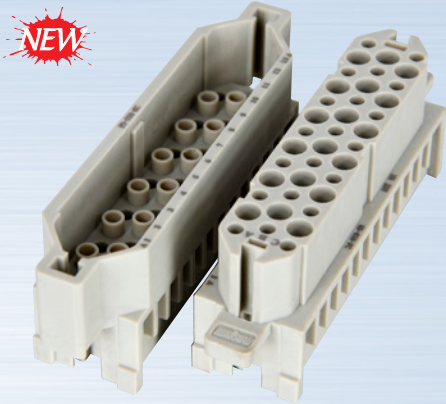


接插体 Insert Series

材料 Material : PC



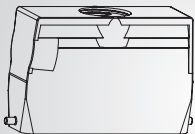
HV-026-M HV-026-F	
工作电流 Rated current	10A
工作电压 Rated voltage	250V
阻燃等级 (据 UL94) Flammability acc.	V0
压线方式 Terminal	M2.5 铜螺钉压接 Screw terminal
导线截面 Wire gauge	0.5~2.5mm <sup>2</sup>



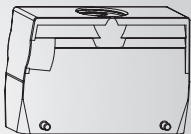
HD-038-MC HD-038-FC	
工作电流 Rated current	10A
工作电压 Rated voltage	250V
阻燃等级 (据 UL94) Flammability acc.	V0
压线方式 Terminal	冷压针压接 Crimp terminal
导线截面 Wire gauge	0.14~2.5mm <sup>2</sup>

H20A 上壳 H20A Metal Housings

顶部进线  
Top entry

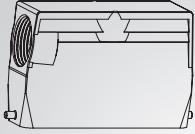


H20A-TE-2B-PG21  
H20A-TE-2B-M25

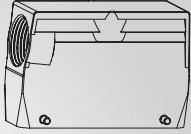


H20A-TE-4B-PG21  
H20A-TE-4B-M25

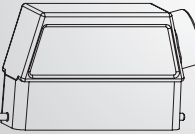
侧面进线  
Side entry



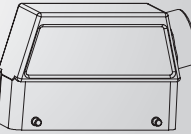
H20A-SE-2B-PG21  
H20A-SE-2B-M25



H20A-SE-4B-PG21  
H20A-SE-4B-M25



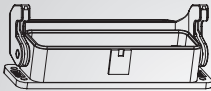
H20A-SEH-2B-PG21  
H20A-SEH-2B-M25



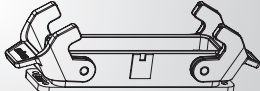
H20A-SEH-4B-PG21  
H20A-SEH-4B-M25

H20A 底壳 H20A Metal Bottoms

开孔安装  
Bulkhead mounting



H20A-BK-1L-S



H20A-BK-2L-S



备注: 1、T: 铁扣 2、S: 塑料铁扣 3、N: 新 4、CV: 尼龙防尘盖 5、MCV: 金属防尘盖