

接插体 Insert Series

材料 Material : PC

NEW



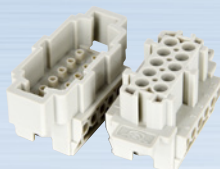
HSB-004-M HSB-004-F

工作电流 Rated current	35A
工作电压 Rated voltage	400/690V
阻燃等级 (据 UL94) Flammability acc.	V0
压线方式 Terminal	M4 螺钉压接 Screw terminal
导线截面 Wire gauge	4.0~6.0mm ²



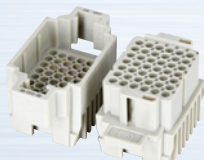
HK-008/24-MC, FC 电力区 信号区

工作电流 Rated current	16A	10A
工作电压 Rated voltage	230/400V	160V
阻燃等级 (据 UL94) Flammability acc.	V0	
压线方式 Terminal	冷压针压接 Crimp terminal	
导线截面 Wire gauge	0.5~4.0mm ² 0.14~2.5mm ²	



HE-010-M HE-010-F

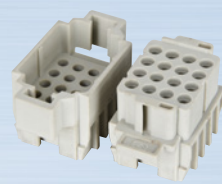
工作电流 Rated current	16A
工作电压 Rated voltage	500V
阻燃等级 (据 UL94) Flammability acc.	V0
压线方式 Terminal	M3 螺钉压接 Screw terminal
导线截面 Wire gauge	1.0~2.5mm ²



HDD-042-MC HDD-042-FC

工作电流 Rated current	10A
工作电压 Rated voltage	250V
阻燃等级 (据 UL94) Flammability acc.	V0
压线方式 Terminal	冷压针压接 Crimp terminal
导线截面 Wire gauge	0.14~2.5mm ²

NEW



HK-016-MC HK-016-FC

工作电流 Rated current	16A
工作电压 Rated voltage	500V
阻燃等级 (据 UL94) Flammability acc.	V0
压线方式 Terminal	冷压针压接 Crimp terminal
导线截面 Wire gauge	0.5~4.0mm ²

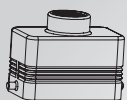
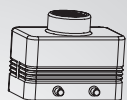
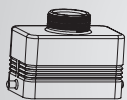
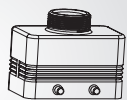
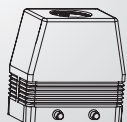
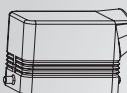
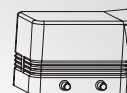
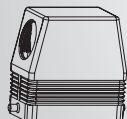
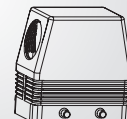
NEW



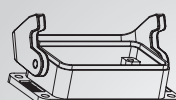
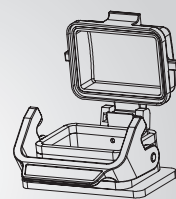
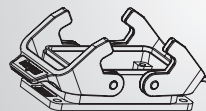
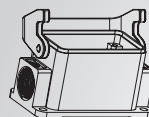
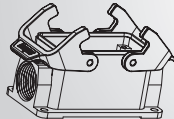
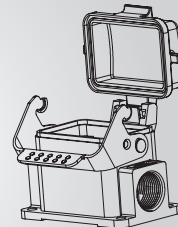
HDE-024-M HDE-024-F

工作电流 Rated current	10A
工作电压 Rated voltage	250V
阻燃等级 (据 UL94) Flammability acc.	V0
压线方式 Terminal	M2.5 铜螺钉压接 Screw terminal
导线截面 Wire gauge	0.5~2.5mm ²

H10B 上壳 H10B Metal Housings

顶部进线
Top entryH10B-TE-2B-PG16
H10B-TE-2B-M20H10B-TE-4B-PG16
H10B-TE-4B-M20H10B-TE-2B-1³/₁₆-18H10B-TE-4B-1³/₁₆-18H10B-TEH-2B-PG21
H10B-TEH-2B-PG29
H10B-TEH-2B-M25
H10B-TEH-2B-M32H10B-TEH-4B-PG21
H10B-TEH-4B-PG29
H10B-TEH-4B-M25
H10B-TEH-4B-M32侧面进线
Side entryH10B-SE-2B-PG16
H10B-SE-2B-M20H10B-SE-4B-PG16
H10B-SE-4B-M20H10B-SEH-2B-PG21
H10B-SEH-2B-PG29
H10B-SEH-2B-M25
H10B-SEH-2B-M32H10B-SEH-4B-PG21
H10B-SEH-4B-PG29
H10B-SEH-4B-M25
H10B-SEH-4B-M32

H10B 底壳 H10B Metal Bottoms

开孔安装
Bulkhead mountingH10B-BK-1L-S
H10B-BK-1L-TH10B-BK-1L-MCV-S
H10B-BK-1L-MCV-TH10B-BK-2L-S
H10B-BK-2L-T表面安装
Surface mountingH10B-SF-1L-PG16-S
H10B-SF-1L-PG16-T
H10B-SF-1L-M20-S
H10B-SF-1L-M20-T
H10B-SF-1L-M25-S
H10B-SF-1L-M25-TH10B-SF-2L-PG16-S
H10B-SF-2L-PG16-T
H10B-SF-2L-M20-S
H10B-SF-2L-M20-T
H10B-SF-2L-M25-S
H10B-SF-2L-M25-TH10B-SF-1L-PG16-MCV-S
H10B-SF-1L-M25-MCV-T

备注: 1、T: 铁扣 2、S: 塑料铁扣 3、N: 新 4、CV: 尼龙防尘盖 5、MCV: 金属防尘盖