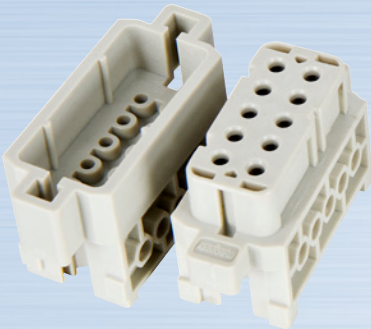


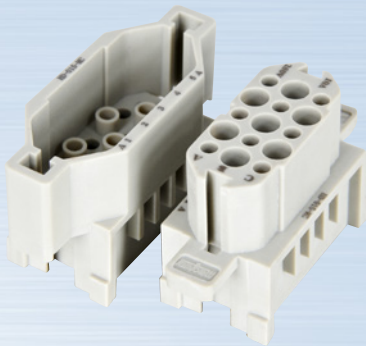


接插体 Insert Series 材料 Material : PC



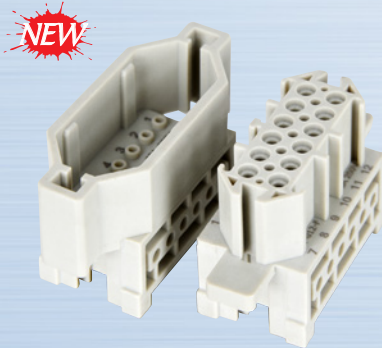
HA-010-M HA-010-F

工作电流 Rated current	16A
工作电压 Rated voltage	250V
阻燃等级 (据 UL94) Flammability acc.	V0
压线方式 Terminal	M3 螺钉压接 Screw terminal
导线截面 Wire gauge	1.0~2.5mm <sup>2</sup>



HD-015-MC HD-015-FC

工作电流 Rated current	10A
工作电压 Rated voltage	250V
阻燃等级 (据 UL94) Flammability acc.	V0
压线方式 Terminal	冷压针压接 Crimp terminal
导线截面 Wire gauge	0.14~2.5mm <sup>2</sup>

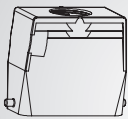


HV-012-M HV-012-F

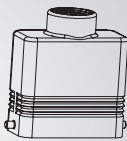
工作电流 Rated current	10A
工作电压 Rated voltage	250V
阻燃等级 (据 UL94) Flammability acc.	V0
压线方式 Terminal	M2.5 铜螺钉压接 Screw terminal
导线截面 Wire gauge	0.5~2.5mm <sup>2</sup>

H10A 上壳 H10A Metal Housings

顶部接线  
Top entry

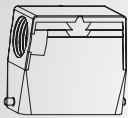


H10A-TE-2B-PG16  
H10A-TE-2B-M20

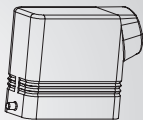


H10A-TEB-2B-PG16  
H10A-TEB-2B-M20

侧面接线  
Side entry



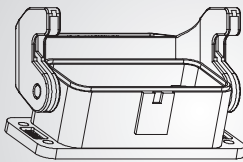
H10A-SE-2B-PG16  
H10A-SE-2B-M20



H10A-SEB-2B-PG16  
H10A-SEB-2B-M20

H10A 底壳 H10A Metal Bottoms

开孔安装  
Bulkhead mounting



H10A-BK-1L-S



备注: 1、T: 铁扣 2、S: 塑料铁扣 3、N: 新 4、CV: 尼龙防尘盖 5、MCV: 金属防尘盖