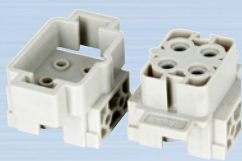


接插体 Insert Series

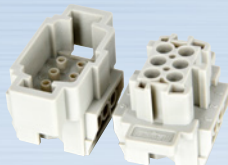
材料 Material : PC

NEW



HR-004-M HR-004-F

工作电流 Rated current	35A
工作电压 Rated voltage	400/690V
阻燃等级 (据 UL94) Flammability acc.	V0
压线方式 Terminal	M4 螺钉压接 Screw terminal
导线截面 Wire gauge	4.0~6.0mm ²



HE-006-M HE-006-F

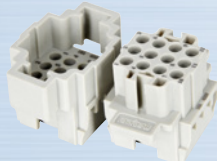
工作电流 Rated current	16A
工作电压 Rated voltage	500V
阻燃等级 (据 UL94) Flammability acc.	V0
压线方式 Terminal	M3 螺钉压接 Screw terminal
导线截面 Wire gauge	1.0~2.5mm ²



HEE-010-MC HEE-010-FC

工作电流 Rated current	16A
工作电压 Rated voltage	500V
阻燃等级 (据 UL94) Flammability acc.	V0
压线方式 Terminal	冷压针压接 Crimp terminal
导线截面 Wire gauge	0.5~4.0mm ²

NEW



HEE-012-MC HEE-012-FC

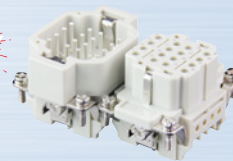
工作电流 Rated current	16A
工作电压 Rated voltage	500V
阻燃等级 (据 UL94) Flammability acc.	V0
压线方式 Terminal	冷压针压接 Crimp terminal
导线截面 Wire gauge	0.5~4.0mm ²



HDD-024-MC HDD-024-FC

工作电流 Rated current	10A
工作电压 Rated voltage	250V
阻燃等级 (据 UL94) Flammability acc.	V0
压线方式 Terminal	冷压针压接 Crimp terminal
导线截面 Wire gauge	0.14~2.5mm ²

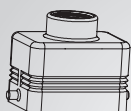
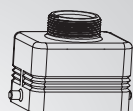
NEW



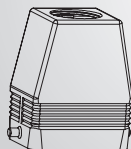
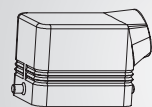
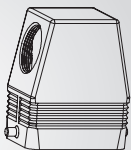
HDE-016-M HDE-016-F

工作电流 Rated current	10A
工作电压 Rated voltage	250V
阻燃等级 (据 UL94) Flammability acc.	V0
压线方式 Terminal	M2.5 铜螺钉压接 Screw terminal
导线截面 Wire gauge	0.5~2.5mm ²

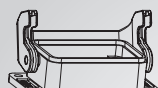
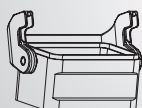
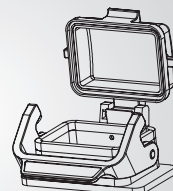
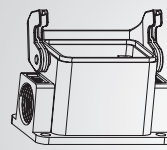
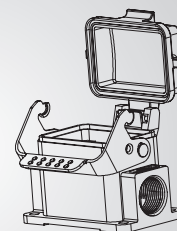
H6B 上壳 H6B Metal Housings

顶部进线
Top entryH6B-TE-2B-PG13.5
H6B-TE-2B-PG16
H6B-TE-2B-M20

H6B-TE-2B-1 3/16-18

H6B-TEH-2B-PG21
H6B-TEH-2B-M25
H6B-TEH-2B-M32侧面进线
Side entryH6B-SE-2B-PG13.5
H6B-SE-2B-PG16
H6B-SE-2B-M20H6B-SEH-2B-PG21
H6B-SEH-2B-M25
H6B-SEH-2B-M32

H6B 底壳 H6B Metal Bottoms

开孔安装
Bulkhead mountingH6B-BK-1L-S
H6B-BK-1L-TH6B-BK-1L-N-T
H6B-BK-1L-N-SH6B-BK-1L-MCV-S
H6B-BK-1L-MCV-T表面安装
Surface mountingH6B-SF-1L-PG16-S
H6B-SF-1L-PG16-T
H6B-SF-1L-M20-S
H6B-SF-1L-M20-TH6B-SF-1L-PG16-MCV-S
H6B-SF-1L-M20-MCV-T

备注: 1、T: 铁扣 2、S: 塑料铁扣 3、N: 新 4、CV: 尼龙防尘盖 5、MCV: 金属防尘盖