

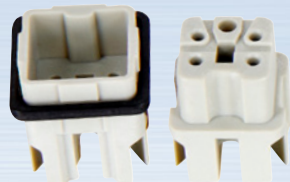
接插体 Insert Series

材料 Material : PC



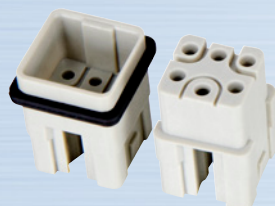
HA-003-M HA-003-F

工作电流 Rated current	10A
工作电压 Rated voltage	230V/400V
阻燃等级 (据 UL94) Flammability acc.	V0
压线方式 Terminal	M3 铜螺钉压接 Screw terminal
导线截面 Wire gauge	1.0~2.5mm ²



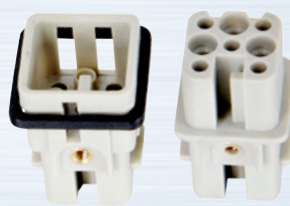
HA-004-M HA-004-F

工作电流 Rated current	10A
工作电压 Rated voltage	230V/400V
阻燃等级 (据 UL94) Flammability acc.	V0
压线方式 Terminal	M3 铜螺钉压接 Screw terminal
导线截面 Wire gauge	1.0~2.5mm ²



HQ-005-MC HQ-005-FC

工作电流 Rated current	16A
工作电压 Rated voltage	230V/400V
阻燃等级 (据 UL94) Flammability acc.	V0
压线方式 Terminal	冷压针压接 Crimp terminal
导线截面 Wire gauge	0.5~2.5mm ²



HD-007-MC HD-007-FC

工作电流 Rated current	10A
工作电压 Rated voltage	250V
阻燃等级 (据 UL94) Flammability acc.	V0
压线方式 Terminal	冷压针压接 Crimp terminal
导线截面 Wire gauge	0.14~2.5mm ²



HD-008-MC HD-008-FC

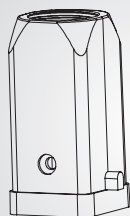
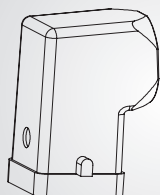
工作电流 Rated current	10A
工作电压 Rated voltage	250V
阻燃等级 (据 UL94) Flammability acc.	V0
压线方式 Terminal	冷压针压接 Crimp terminal
导线截面 Wire gauge	0.14~2.5mm ²



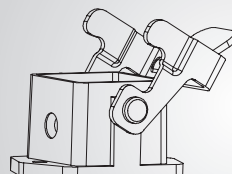
HQ-007-MC HD-007-FC

工作电流 Rated current	10A
工作电压 Rated voltage	230V/400V
阻燃等级 (据 UL94) Flammability acc.	V0
压线方式 Terminal	冷压针压接 Crimp terminal
导线截面 Wire gauge	0.5~2.5mm ²

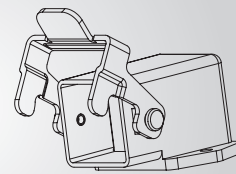
H3A 上壳 H3A Metal Housings

顶部进线
Top entryH3A-TE-2B-M20
H3A-TE-2B-PG11侧面进线
Side entryH3A-SE-2B-M20
H3A-SE-2B-PG11

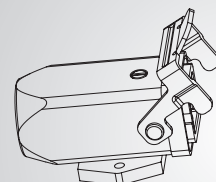
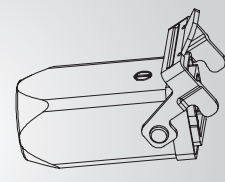
H3A 底壳 H3A Metal Bottoms

开孔安装
Bulkhead mounting

H3A-BK-1L



H3A-BK-SE-1L

表面安装
Surface mountingH3A-SF-1L-M20
H3A-SF-1L-PG11H3A-CCT-1L-M16
H3A-CCT-1L-M20
H3A-CCT-1L-PG11

备注: 1、T: 铁扣 2、S: 塑料铁扣 3、N: 新 4、CV: 尼龙防尘盖 5、MCV: 金属防尘盖